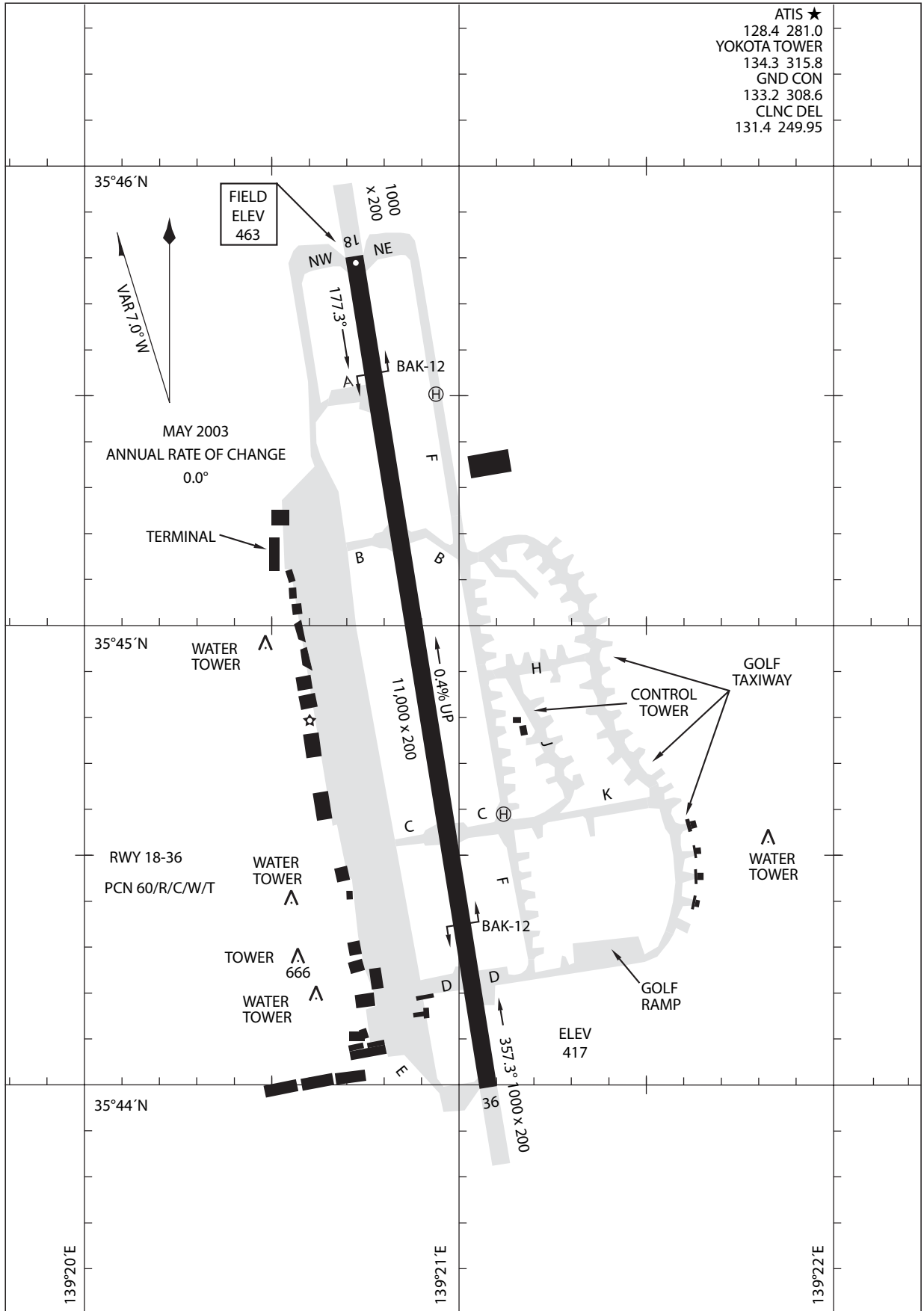
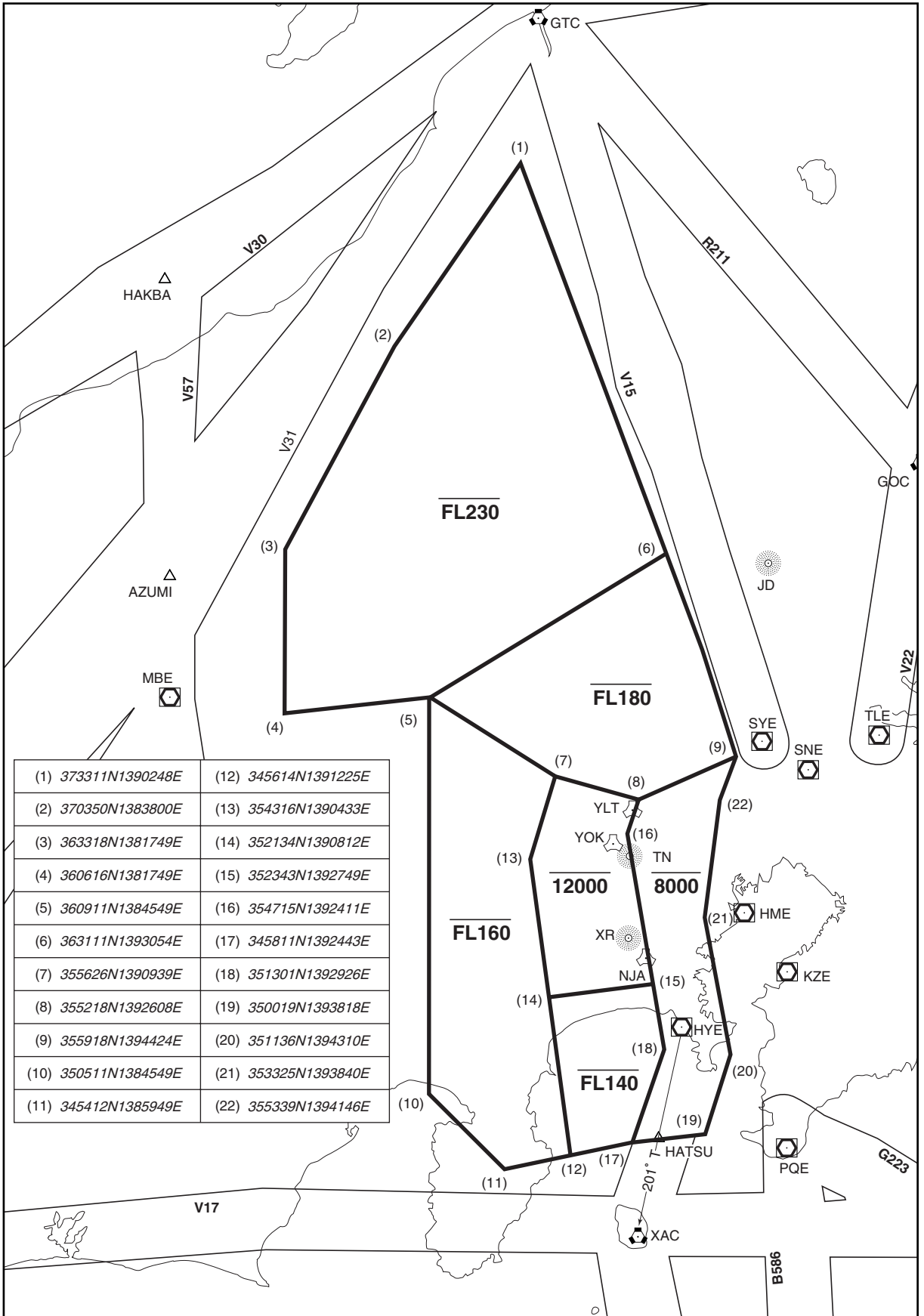


RJTY / YOKOTA

AD CHART



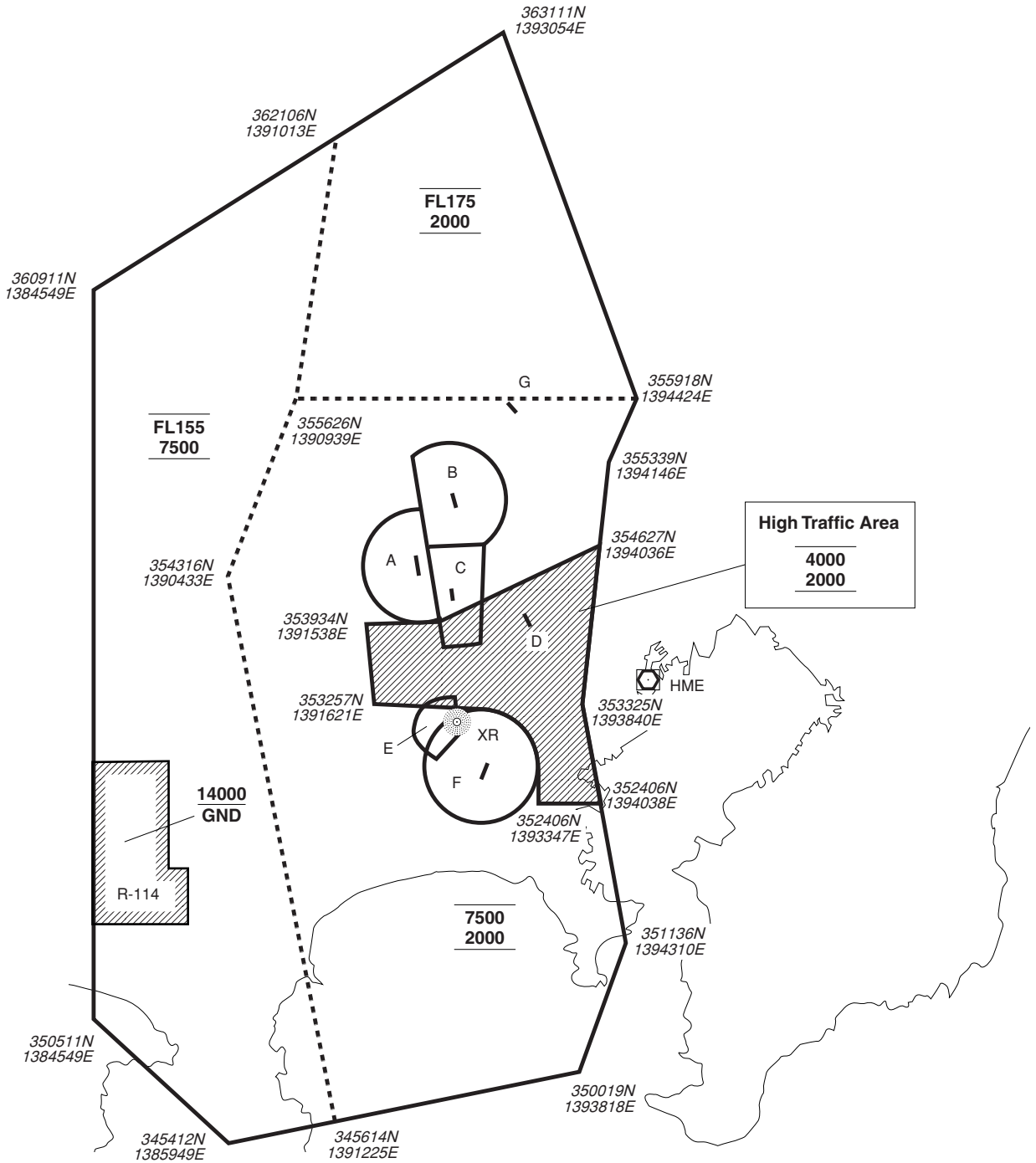
横田進入管制空域
Yokota Approach Control Area



YOKOTA VFR RADAR ADVISORY SERVICE AREA

CALL YOKOTA APPROACH CONTROL ON:

- (1) SFC to 5500: 120.7MHz
- (2) 6000 to FL175: 118.3MHz



Control Zone	COM(MHz)
A. RJTY	SFC-3000 134.3
B. RJTJ	SFC-6000 122.05
C. RJTC	SFC-3000 118.85
D. RJTF	none 130.8
E. RJTR	SFC-1700 122.5
F. RJTA	SFC-6000 126.2
G. Honda	none 130.75